



Tattenham Way, Tadworth

The **PERSONAL** Agent



# Offers In The Region Of £325,000 Leasehold

- Ground Floor Maisonette
- Two Double Bedrooms
- Spacious Living/Dining Room
- Private Garden
- Detached Garage
- Close to Shops
- Share of Freehold
- Communal Parking



Set in a highly accessible position close to local amenities, schools and transport links this stunning maisonette must be viewed first hand to be fully appreciated. The property is accessed via its own front door, has direct access to its own private courtyard garden and is offered to the market with Share Of Freehold.

The property comprises a private entrance opening to the entrance hallway with access to a storage cupboard and doors to; rear aspect 15ft living/dining room which is bright and airy due to

the abundance of windows which overlook the garden, access to storage cupboards and a door to the kitchen which comprises a range of eye and base level units and space for utilities and a door to the private garden. From the hall there are doors to the two double bedrooms and the family bathroom.

Outside to the rear is the 27ft private garden which is mainly paved for low maintenance with a boarder with mature planting and a lockable gate. To the side of the property there is a detached garage with power and light and un-allocated communal parking.

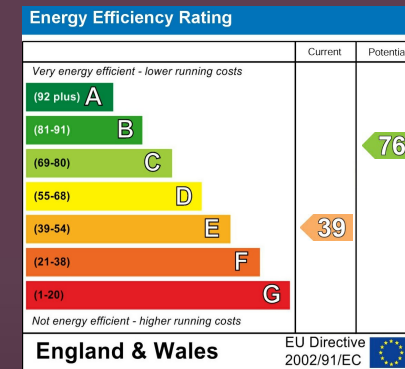
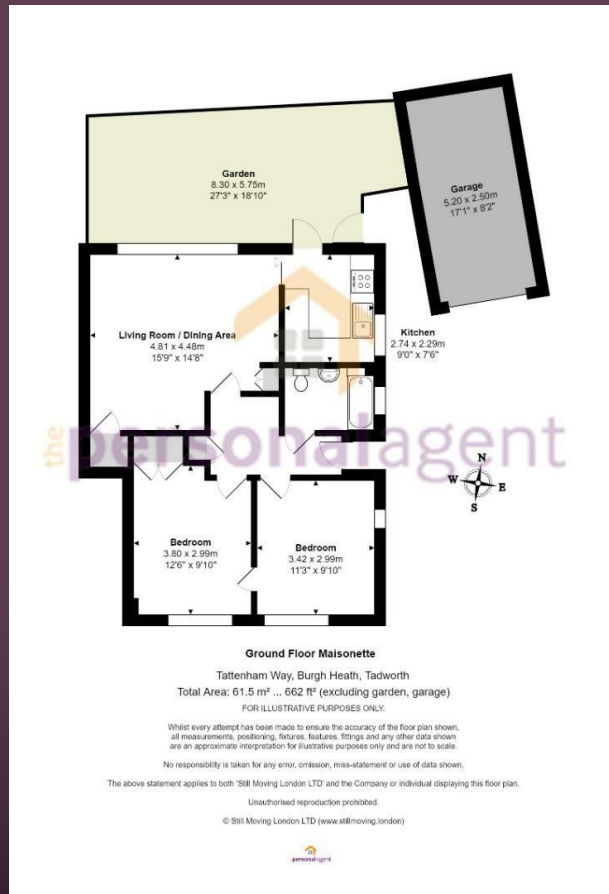
The property is located in Burgh Heath between the popular centres of Banstead and Epsom. Local shops and amenities are located on the doorstep and the property is well situated for local schools. Rail links are available from a number of local stations including Tattenham Corner and Banstead and there is easy access to the M25 at Reigate Hill.

Share of Freehold









**EPSOM OFFICE**  
 2 West Street  
 Epsom, Surrey, KT18 7RG  
 01372 745 850

**STONELEIGH/EWELL OFFICE**  
 62 Stoneleigh Broadway  
 Stoneleigh, Surrey, KT17 2HS  
 020 8393 9411

**BANSTEAD OFFICE**  
 141 High Street  
 Banstead, Surrey, SM7 2NS  
 01737 333699

**LETTINGS & MANAGEMENT**  
 163 High Street  
 Epsom, Surrey, KT19 8EW  
 01372 726 666



The Personal Agent Ltd. Registered office: 2A Boston Rd, Henley-on-Thames RG9 1DY.  
 Registered in England No. 4398817.



**Please Note:** Whilst every attempt has been made to ensure the accuracy of the floorplans contained here, measurements of doors, windows and room areas are approximate and no responsibility is taken for any error, omission or mis-statement. These plans are for representation purposes only and should be used as such by and prospective purchaser. The services, systems and appliances listed in the specification have not been tested by The Personal Agent and no guarantee as to their operating ability or their efficiency can be given. All images and text used to advertise our properties are for the sole use of The Personal Agent Ltd.



